



# Anthropomorphism in Photography: Exploring Human Traits in Imagery

UNDERSTANDING HUMAN CHARACTERISTICS IN PHOTOGRAPHIC ART

# Agenda for Today's Discussion



- ▶ Introduction to Anthropomorphism
- ▶ Historical Context of Anthropomorphism in Visual Arts
- ▶ Anthropomorphism in Modern Photography
- ▶ Notable Photographers Using Anthropomorphism
- ▶ Anthropomorphism in Advertisements
- ▶ Anthropomorphism in Fine Art Photography
- ▶ Finding Human Shapes in Nature
- ▶ Human Shapes in Shadows
- ▶ Human Characteristics in Animals
- ▶ Human Characteristics in Toys





# INTRODUCTION TO ANTHROPOMORPHISM

# DEFINITION AND MEANING



## Origin of Anthropomorphism

The term anthropomorphism comes from Greek, combining 'anthropos' meaning human, and 'morphe' meaning form.

## Anthropomorphism in Photography

In photography, anthropomorphism refers to portraying animals, objects, or nature with human-like traits or behaviors.

## Examples of Anthropomorphism

Common examples include animals dressed as humans, objects with faces, or nature depicted with emotions.

## Anthropomorphism vs Personification.

In literature it's more of a difference but in short, a personification is often an depiction of an emotion that Humans have.



# ETYMOLOGY AND ORIGINS

## Ancient Cultural Roots

Anthropomorphism has its origins in ancient cultures, where both animals and objects were given human traits in stories and art.

## Mythological Representations

In mythology, various cultures depicted gods, animals, and inanimate objects with human characteristics, showcasing creativity and storytelling.

## Human Fascination

The use of anthropomorphism illustrates a long-standing human fascination with connecting to the world through relatable forms.



# CULTURAL SIGNIFICANCE



## Storytelling Impact

Anthropomorphism enhances storytelling by making non-human characters relatable, bridging cultural differences and fostering connection.

## Artistic Expression

In art, anthropomorphism allows for the expression of human emotions through non-human forms, enriching cultural narratives and visual experiences.

## Literature and Empathy

Literature often employs anthropomorphism to create empathy, enabling readers to connect deeply with characters that are not human.





# HISTORICAL CONTEXT OF ANTHROPOMORPHISM IN VISUAL ARTS

# EARLY EXAMPLES IN ART



## **Anthropomorphism in Art**

Ancient art often depicted gods and mythological beings with human traits, showcasing cultural beliefs and narratives.

## **Cultural Reflection**

These artistic representations reflect the values, beliefs, and stories of the cultures that created them, offering insight into their worldviews.

## **Mythological Creatures**

Mythological creatures depicted in art often served to convey moral lessons or explain natural phenomena, demonstrating the role of mythology in early societies.



# INFLUENCE ON CLASSICAL PAINTING AND SCULPTURE



## **Anthropomorphic Elements**

Renaissance artists skillfully used anthropomorphic elements to express complex ideas and emotions in their works.

## **Humanity and Divinity**

The blending of human and divine characteristics in art blurred the lines between humanity and divinity during the Renaissance.

## **Masterpieces of Renaissance**

Renaissance masterpieces often featured humanized figures, creating a dialogue between the viewer and the artwork.



# TRANSITION TO MODERN VISUAL ARTS

## **Surrealism's Impact**

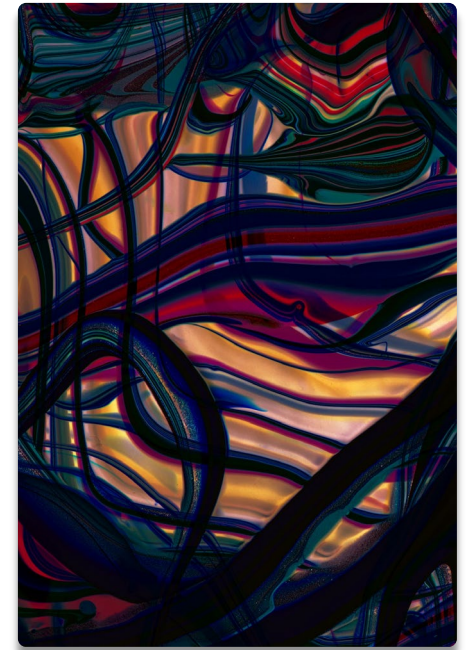
Surrealism explored dream-like scenes and irrational juxtapositions, often giving human traits to inanimate objects and creatures.

## **Expressionism and Emotion**

Expressionism emphasized emotional experience over reality, using vivid colors and distorted forms to express human feelings and thoughts.

## **Anthropomorphism in Art**

Anthropomorphism became a powerful tool for artists to convey human emotions through non-human subjects, connecting viewers with deeper themes.







# ANTHROPOMORPHISM IN MODERN PHOTOGRAPHY

# EVOLUTION OF THE CONCEPT IN PHOTOGRAPHY



## **Cultural Shifts in Photography**

The evolution of photography has mirrored significant cultural changes, influencing how we perceive humanity's connection to the world.

## **Technological Advancements**

Advancements in technology have allowed photographers to explore new ways of merging human elements with artificial and natural environments.

## **Anthropomorphism in Art**

Photographers experiment with anthropomorphism, blending human qualities with nature and artificial elements to create unique visual narratives.



# COMMON THEMES AND TECHNIQUES

## Themes of Identity

Identity is a central theme in anthropomorphic photography, exploring how subjects reflect human characteristics and experiences.

## Emotional Connection

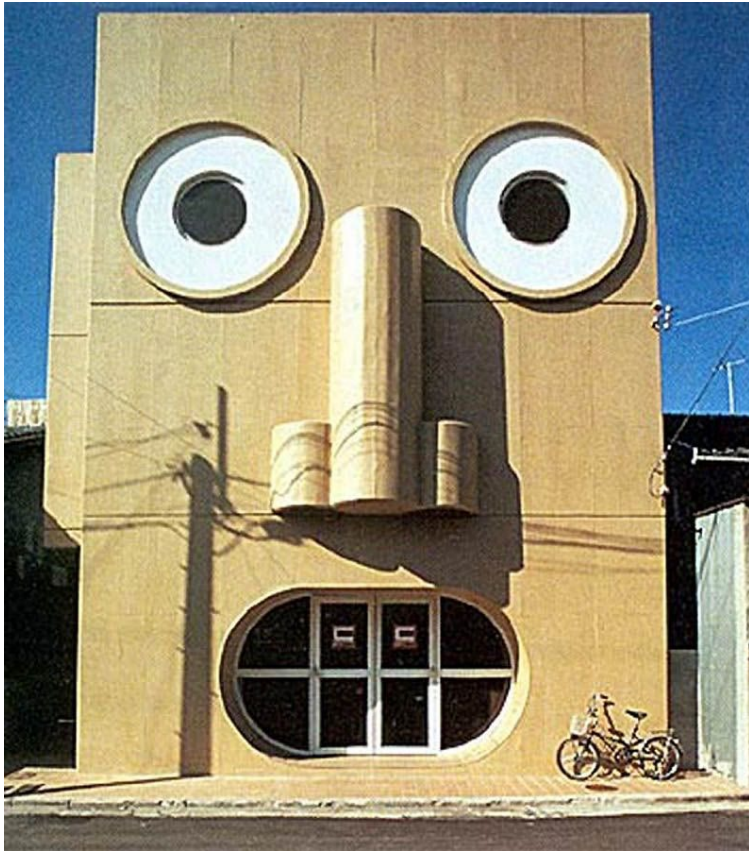
Emotion plays a crucial role in anthropomorphic photography, capturing feelings that resonate with viewers and evoke empathy.

## Staging and Lighting

Techniques such as staging and lighting are essential in enhancing the human-like traits of the subjects, making them more relatable.



# IMPACT ON VISUAL STORYTELLING



## **Emotional Connection**

Anthropomorphism helps create emotional narratives that resonate deeply with viewers, enhancing their engagement with the imagery.

## **Narrative Building**

Using anthropomorphism allows photographers to craft compelling stories, inviting viewers to interpret and connect with the visuals.

## **Enhanced Engagement**

By fostering connections through anthropomorphism, photographers can boost viewer engagement and interest in their work.





# NOTABLE PHOTOGRAPHERS USING ANTHROPOMORPHISM

# CINDY SHERMAN: HUMAN CHARACTERISTICS IN TOYS



## Conceptual Portraits

Sherman's use of dolls in her portraits creates a dialogue about identity and the role of toys in shaping perceptions of self.

## Challenging Identity

Her work challenges traditional notions of identity, using toys to explore the complexities of representation in modern society.



## Emotions in Play

Through her dolls, Sherman captures a range of human emotions, reflecting societal norms and individual experiences.



# TIM WALKER: WHIMSICAL AND SURREALIST ANTHROPOMORPHISM

## Dreamlike Quality

Walker's photographic style is imbued with a dreamlike quality that transports viewers to fantastical realms.

## Fantastical Elements

He incorporates fantastical elements that enhance the surreal nature of his photography, creating magical narratives.

## Anthropomorphism

Walker often uses anthropomorphic subjects that evoke a sense of wonder and challenge the boundaries of reality.



# WILLIAM WEGMAN: DOGS WITH HUMAN POSES



## Unique Dog Photography

Wegman's work features dogs dressed in human clothing, presenting them in amusing and relatable scenarios.

## Exploring Human-Pet Connection

His images highlight the bond between pets and their owners through playful and humorous portrayals.

## Artistic Expression

Wegman's photography is an artistic exploration that blends humor with the essence of companionship.





# ANTHROPOMORPHISM IN ADVERTISEMENTS

# EXAMPLES



## **Animated Characters**

Animated characters in campaigns effectively capture audience attention by creating a relatable and engaging narrative.

## **Personified Animals**

Personified animals in advertising can evoke emotions and create a memorable connection with the audience.

## **Audience Engagement**

Successful campaigns utilize anthropomorphism to enhance audience engagement and improve brand recall.





# ANTHROPOMORPHISM IN FINE ART PHOTOGRAPHY

# SYMBOLISM AND METAPHOR

## Anthropomorphism in Art

Anthropomorphism is used in photography to represent human experiences and emotions through non-human subjects.

## Symbolism in Photography

Symbolism is a powerful tool in photography that evokes emotions and conveys deeper meanings related to societal themes.

## Emotional Reflection

Photographers aim to reflect human emotions and experiences through the use of visual metaphors and symbolism in their work.







FINDING  
HUMAN  
SHAPES IN  
NATURE

# TECHNIQUES FOR SPOTTING HUMAN-LIKE FORMS

## Observing Patterns

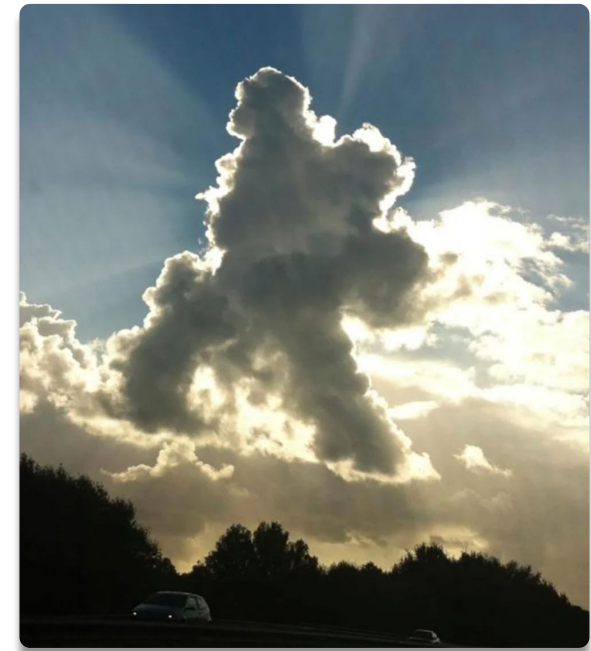
Photographers should focus on observing the natural patterns and shapes that resemble human forms in their environment.

## Composition Techniques

Utilizing composition techniques helps capture human-like forms effectively, emphasizing balance and harmony in the frame.

## Perspective Focus

Changing perspective can reveal new human-like formations in nature, allowing for creative photography opportunities.





# EXAMPLES IN LANDSCAPES AND NATURAL FORMATIONS



## **Anthropomorphic Landscapes**

Many landscapes display features that resemble human characteristics, creating a unique visual experience for viewers.

## **Impact of Photography**

Photographers capture these anthropomorphic traits, emphasizing the connection between nature and human perception.

## **Artistic Representation**

Artistic interpretations of landscapes enhance the perception of anthropomorphic characteristics through visual storytelling.

# PROJECT IDEAS AND CREATIVE EXERCISES



## Identifying Shapes in Nature

Creative exercises help participants recognize anthropomorphic shapes in their natural surroundings, enhancing observational skills.

## Scavenger Hunts

Organizing scavenger hunts encourages exploration and creativity. Participants search for specific natural shapes or themes.

## Themed Photo Challenges

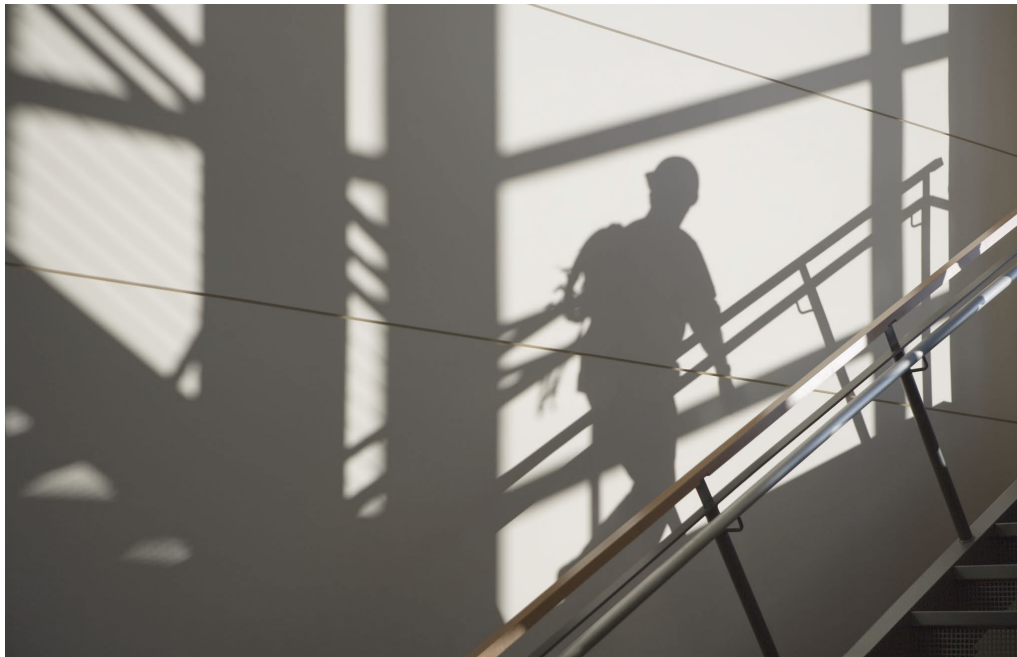
Themed photo challenges inspire creativity by prompting participants to capture images of anthropomorphic shapes during their outings.





# HUMAN SHAPES IN SHADOWS

# CAPTURING SHADOWS WITH HUMAN FORMS



## Experimenting with Light

Photographers can manipulate light to create intriguing shadows that mimic human forms, enhancing visual storytelling.

## Importance of Composition

Effective composition is vital in capturing shadows, guiding the viewer's eye and emphasizing the human-like shapes created by light.

## Timing and Movement

Timing is essential as it allows photographers to capture the fleeting moments when shadows align perfectly with human forms.



# TOOLS AND TECHNIQUES FOR SHADOW PHOTOGRAPHY



## Reflectors and Diffusers

Using reflectors and diffusers can dramatically improve the quality and control of shadows in photography.

## Backlighting Techniques

Backlighting can create striking contrasts and enhance the depth of shadows in your photographs.

## Long Exposure Photography

Long exposures can add a unique dimension to shadow photography, capturing movement and depth over time.

# INSPIRATIONAL EXAMPLES AND PROJECTS



## Shadow Photography Techniques

Experimenting with various techniques in shadow photography can enhance creativity and artistic expression.

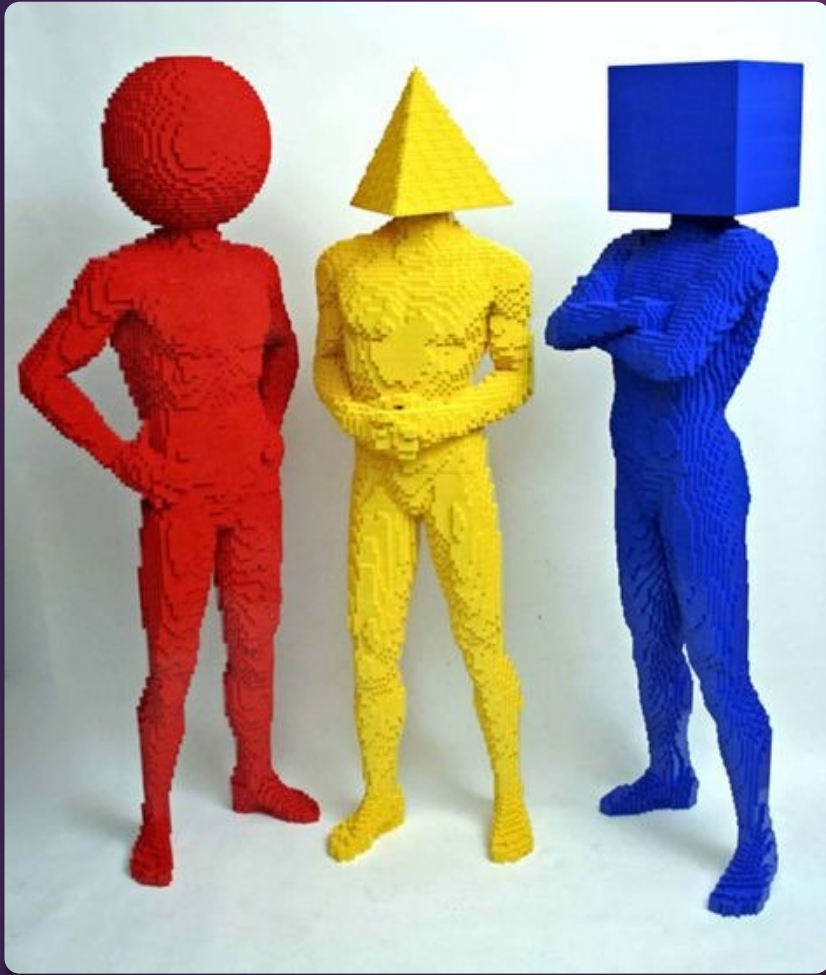
## Shadow Play with Subjects

Using different subjects for shadow play can create dynamic and interesting photographic compositions.

## Exploring Environments

Different environments can drastically change the appearance and impact of shadows in photography.





# HUMAN CHARACTERISTICS IN TOYS

# USING TOYS TO MIMIC HUMAN BEHAVIOR



## Staging Human Interactions

Toys can be creatively arranged to replicate common human interactions, making for compelling visuals.

## Humor in Photography

Using toys allows photographers to inject humor into their work, providing a light-hearted perspective.

## Thought-Provoking Narratives

Toys can be utilized to create narratives that provoke thought and challenge the viewer's perceptions of reality.



# CREATIVE STAGING AND COMPOSITION



## Importance of Staging

Creative staging is essential for enhancing the visual storytelling in toy photography, making toys appear lively and engaging.

## Adjusting Angles

Adjusting camera angles can dramatically change the perception of toys, highlighting their features and creating interest.

## Utilizing Props

Props play a significant role in toy photography, adding context and depth to the composition and enhancing the photo's narrative.

# Conclusion

## **Human Connection in Art**

Anthropomorphism encourages viewers to connect with subjects on a personal level, enhancing emotional engagement.

## **Imagination and Storytelling**

This technique sparks imagination, allowing viewers to interpret stories through familiar human experiences.

## **Artistic Technique**

Using anthropomorphism in photography adds depth and richness to visual narratives, transforming ordinary subjects into relatable characters.



# Conclusion

## **Layers**

An easy technique is using layers in editing software. Combining two or more images

## **Imagination**

This topic is very subjective, sometimes we Also, look more for a human form then other times. Also, Emotions are often very different for viewers.

## **Try**

Try and observe. Take multiple shots, and don't over think it. Some pictures need editing and anthropomorphic image does not often come SOOC.