

The top of the slide features a decorative border with a repeating pattern of semi-circles and concentric dotted lines in a dark red color.

Portrait photography

Basics of getting the Whangarei Camera Club Trophy.

Portrait; The first "Selfie"

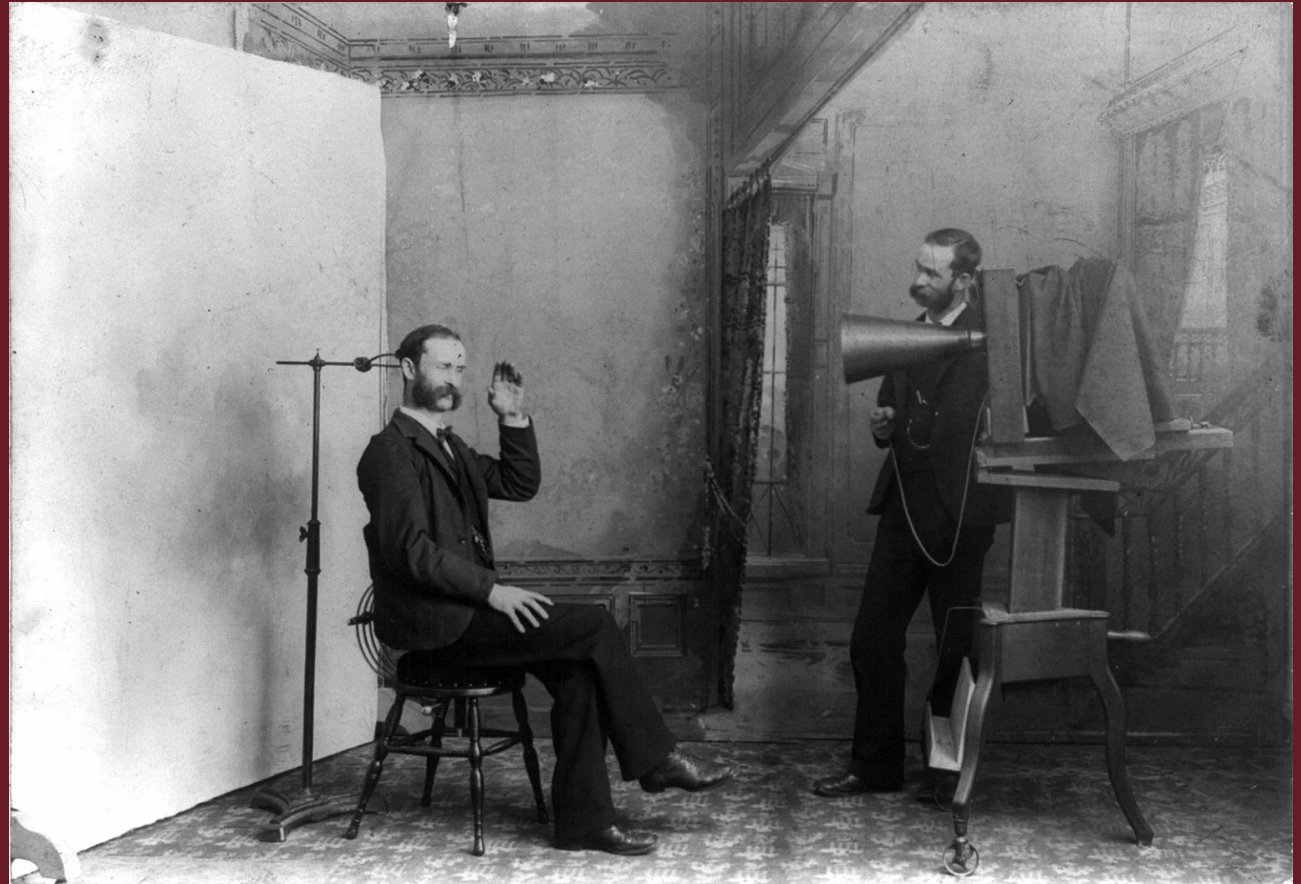
Early photography was done by Scientists. Learning to control development the first portraits are from the pioneers themselves.



Wikipedia, Robert Cornelius

Portrait; Stand Still

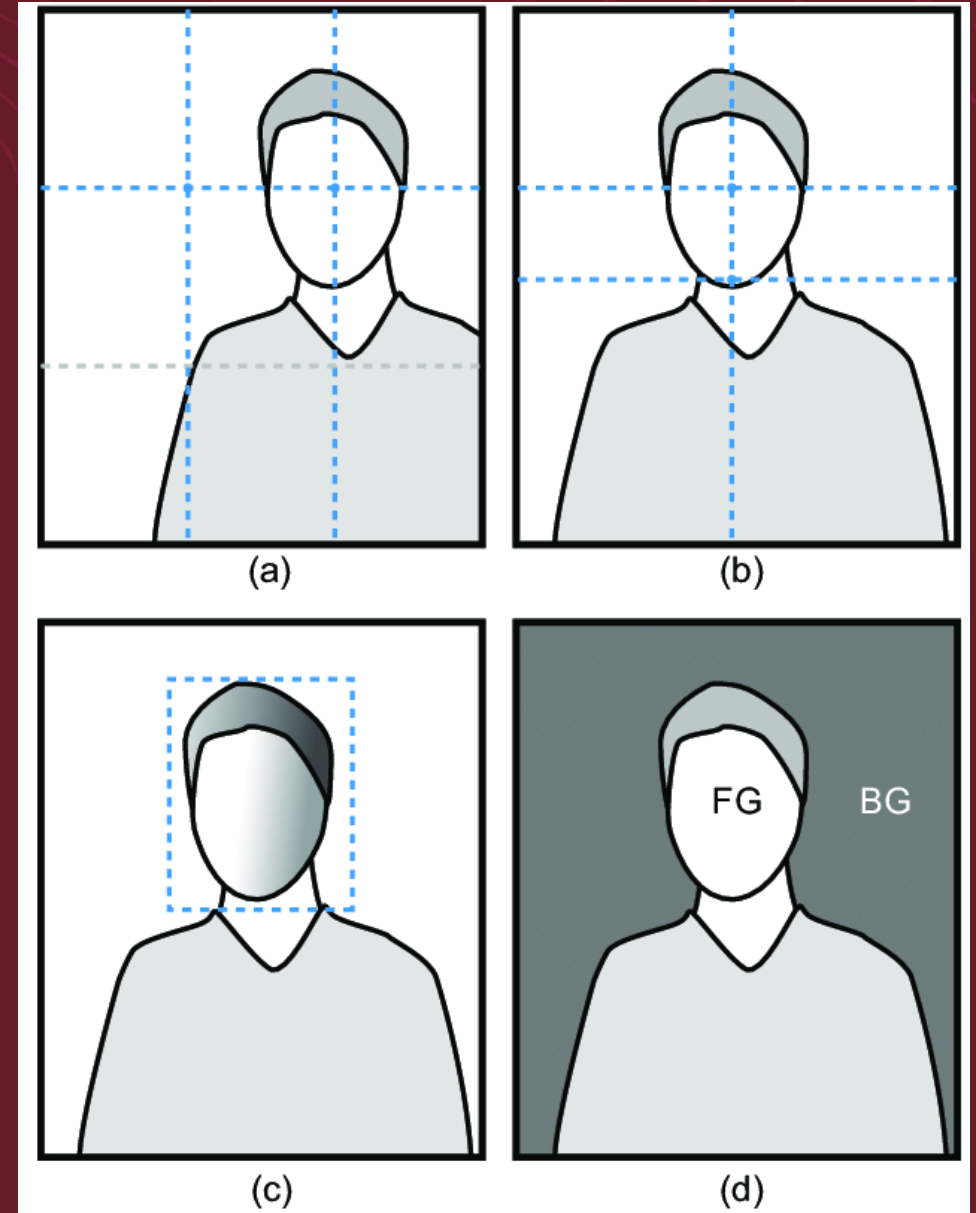
Holding still for many minutes to create a sharp image was not easy. Holding still with aids or taking pictures of sleeping people, or even dead people.



Wikipedia, Early portrait photography

Picture or portrait???

Portrait photography is about capturing the Essence, Personality, Identity and Attitude of a Person utilizing backgrounds, lighting and posing.



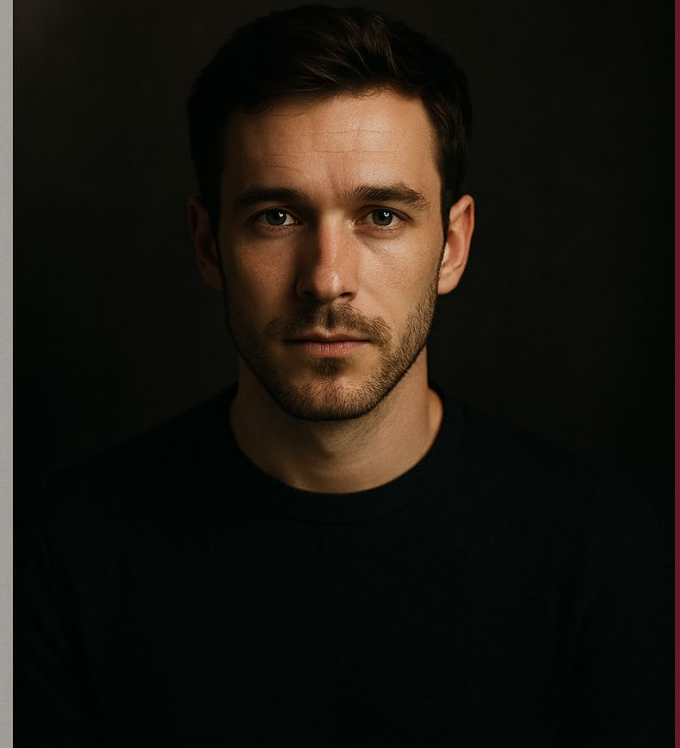
Picture or portrait???

Subject isolation
Subject connection
Lighting
Expression
Lens
Post processing

PICTURE



PORTRAIT



But rules are vague.....'animals?!?'

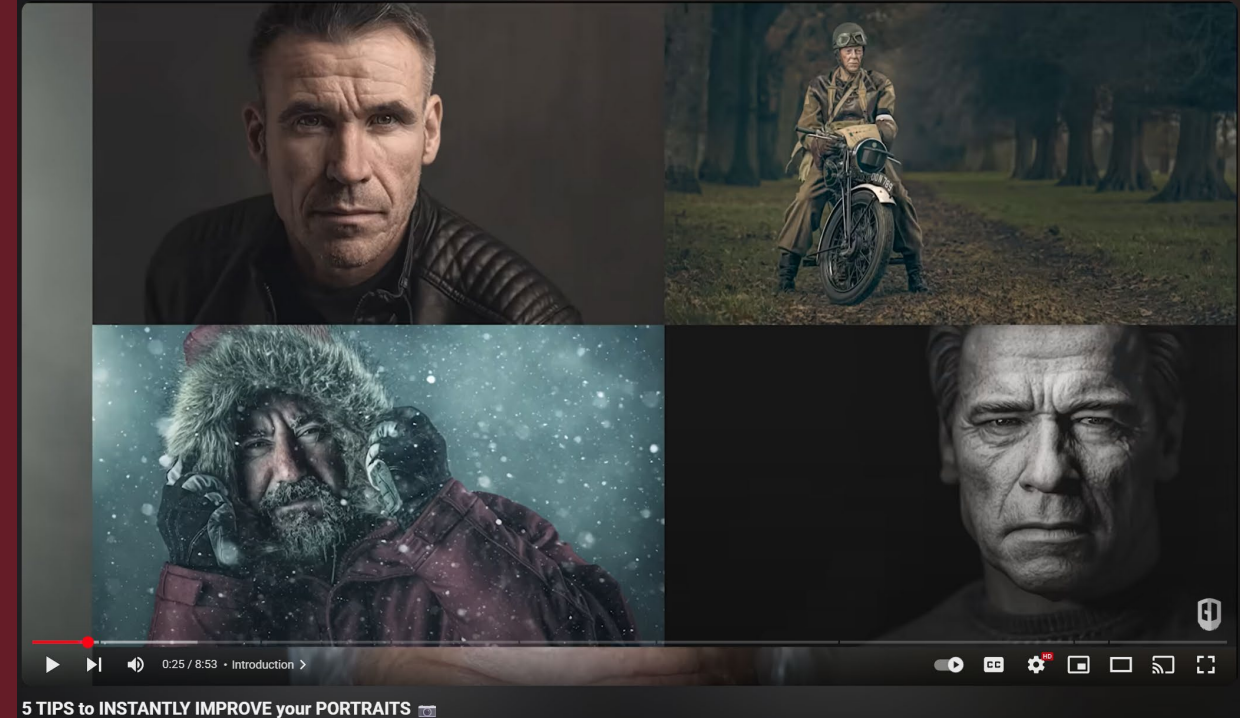
Copilot AI

Connection

A connection is often reached by having the subject look at you not at *your camera*.

We can always tell a personal or material connection.

Looking through the lens...to the viewer



<https://www.youtube.com/watch?v=AtdIdoQMISM&t=1s>

Glyn Dewis

<https://glyndewis.com/portraits>



Light

Full
3-point
High key
Low key
Butterfly
Top light
Bottom light
Beam (projected)

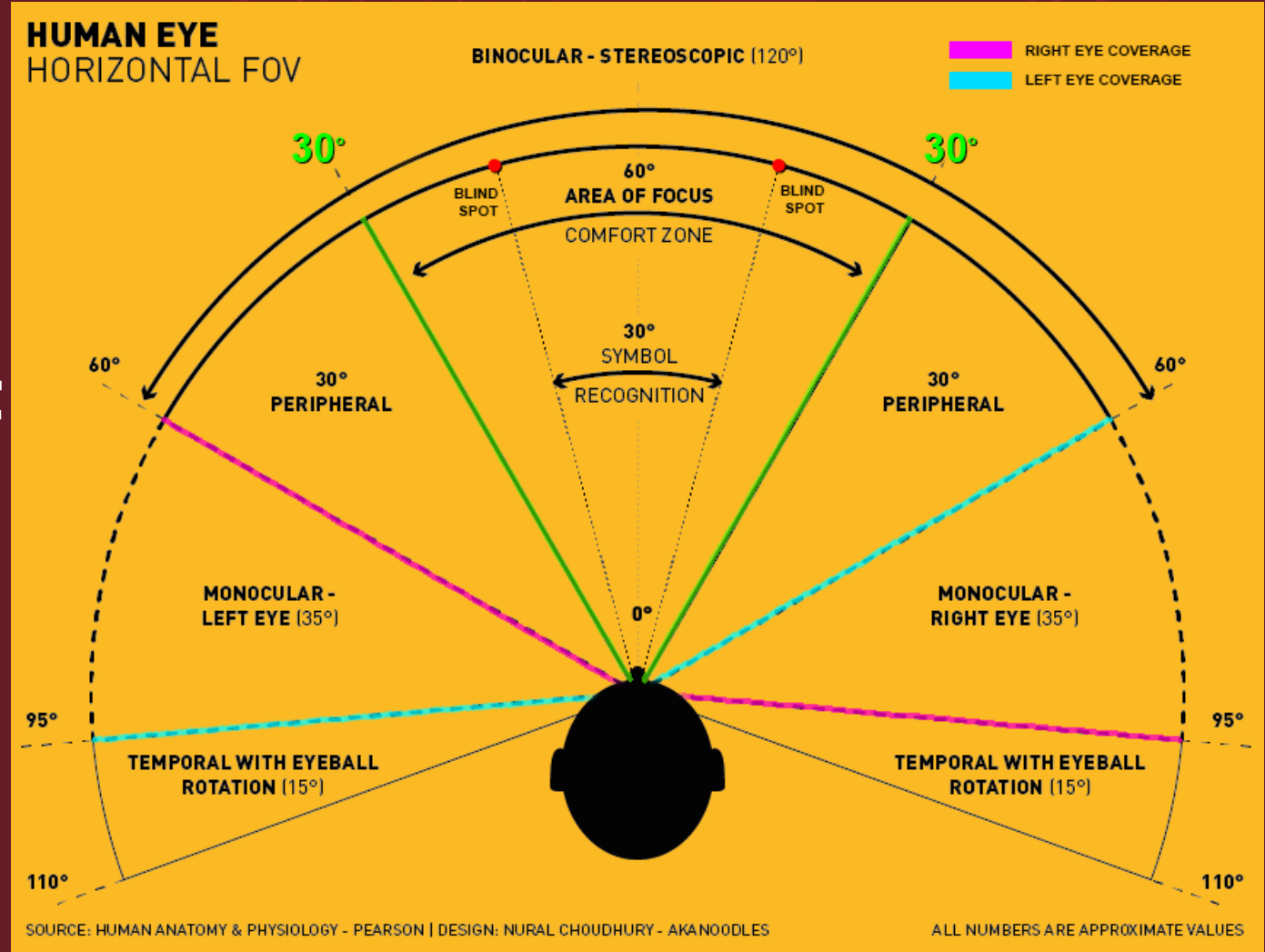


8 LIGHTING SETUPS

[GUMROAD.COM/IMRACHELBRADLEY](https://gumroad.com/imrachelbradley)

Lens, Focal length

We are human.
Our vision has a angle of 190Deg.
But we see clear at about 120Deg. The Peripheral
We find things interesting inside the area of focus. This is <60Deg. And <30Deg.
We find "Zoomed"

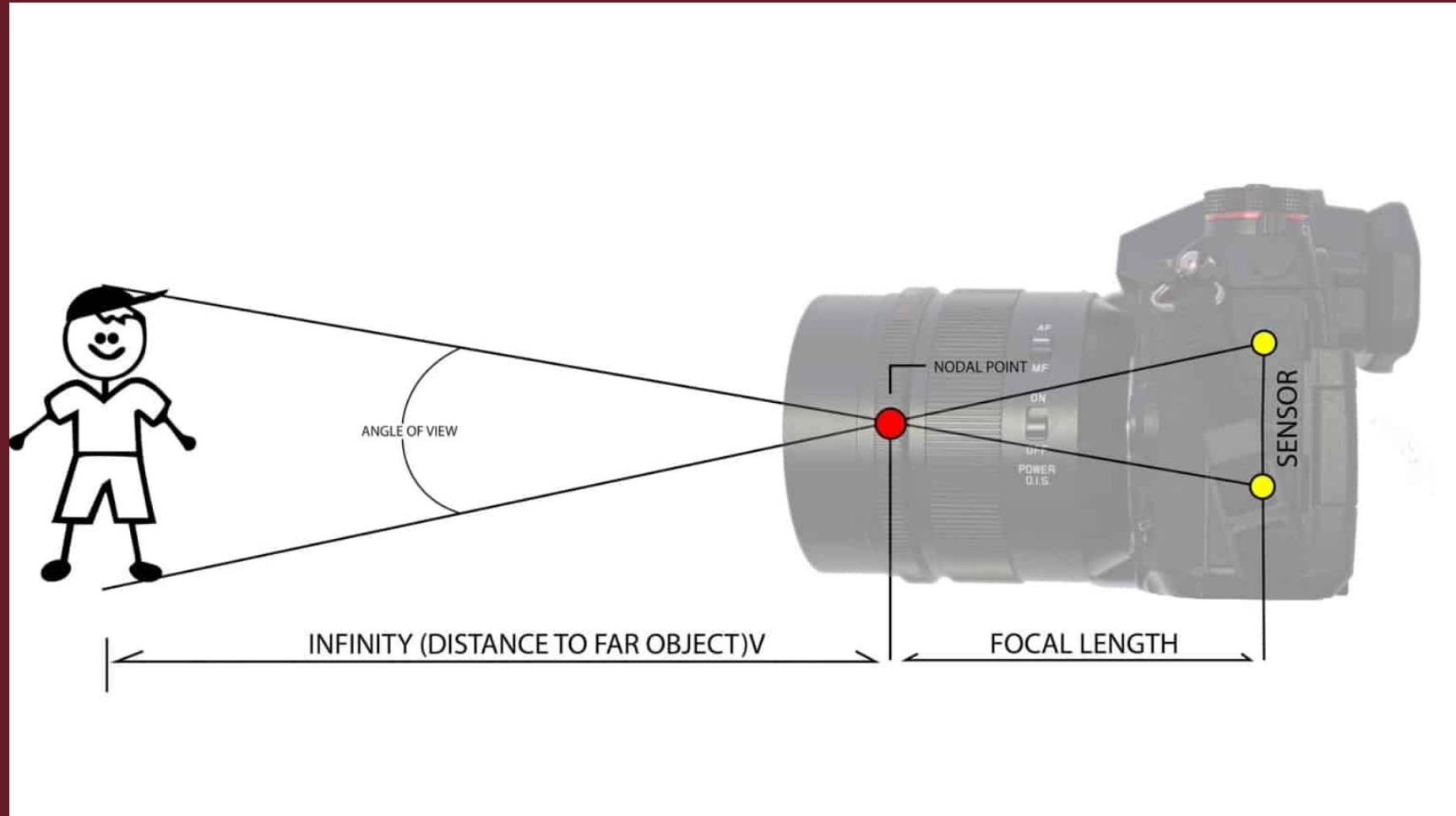


Lens, Focal length

A camera has also a viewing angle.

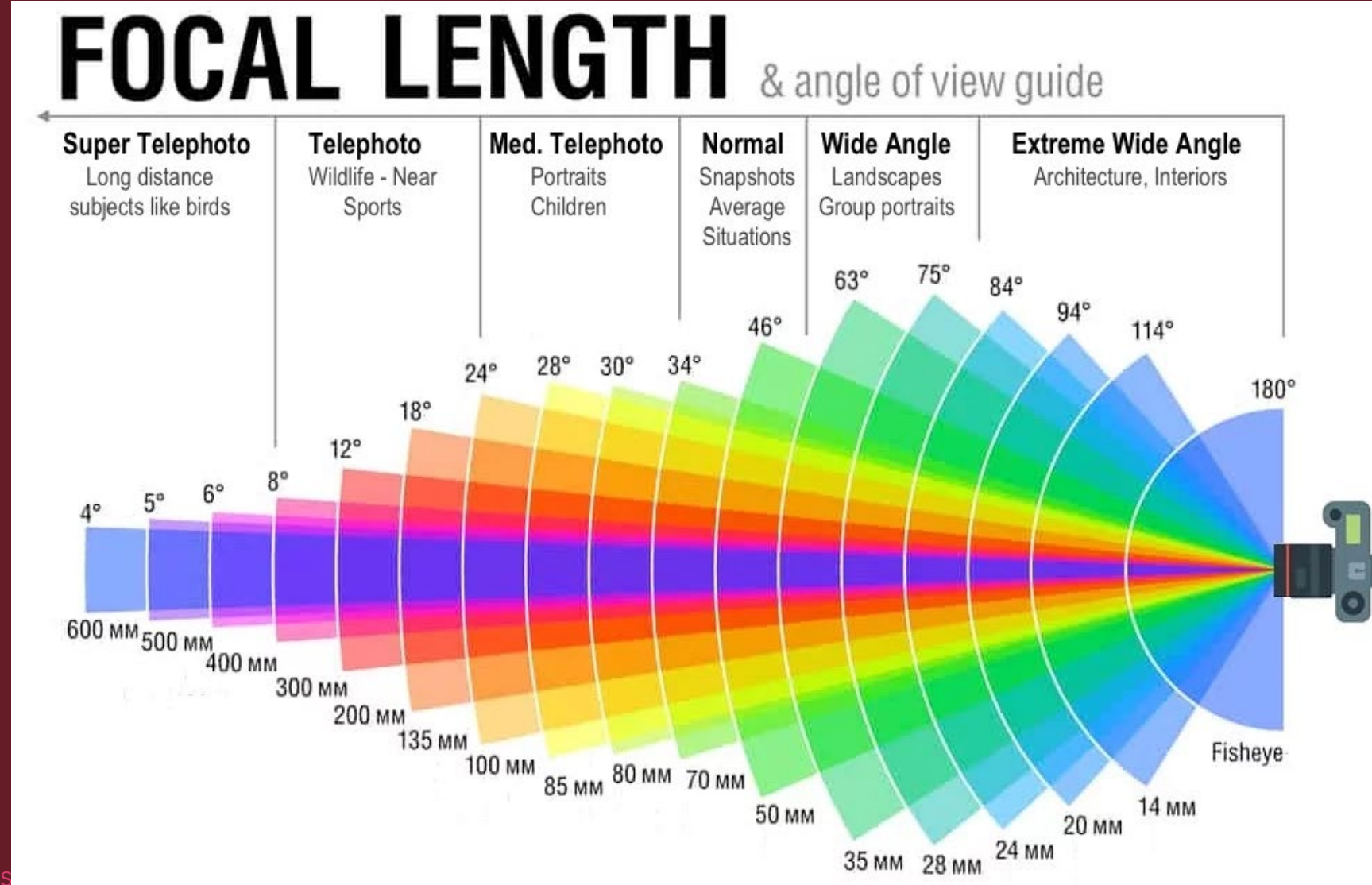
And it is translated in focal length

Kit lens 18-55
Standard 24-135
Classic 24-70



Lens, Focal length

- point&shoot3
- 5mm
- Pancake
- 40mm
- Nifty
- 50mm
- Portrait lens
- 85mm
- Closer
- 135mm (zoom)



Lens, Focal length

It matters.
Wide angle = big nose no ears
Zoom =
round head flat features.
35 and 50 leaves background
70 to 135 creates low focus background



Lens, Focal length

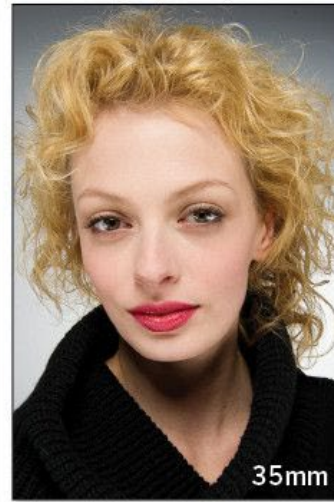
It matters.

**Wide angle = big
nose no ears**

**Zoom =
round head flat
features.**

**35 and 50 leaves
background**

**70 to 135 creates low
focus background**



Lets do this!

11mm (fisheye) breaching personal space.

20mm close up to the subject keep face same size in the frame.

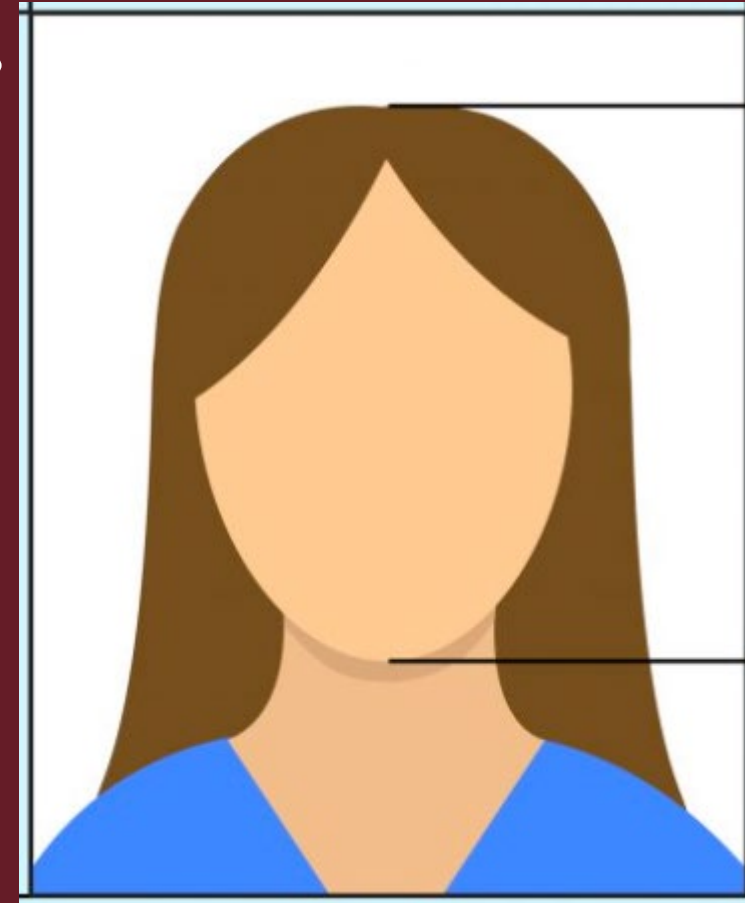
50mm a little further away so the face stays the same size in the frame.

80mm again further, but again the same size face.

135mm your subject looked zoomed in.

make distance, so the face stays the same.

300mm does this fit in the room?



And do this too!!!!

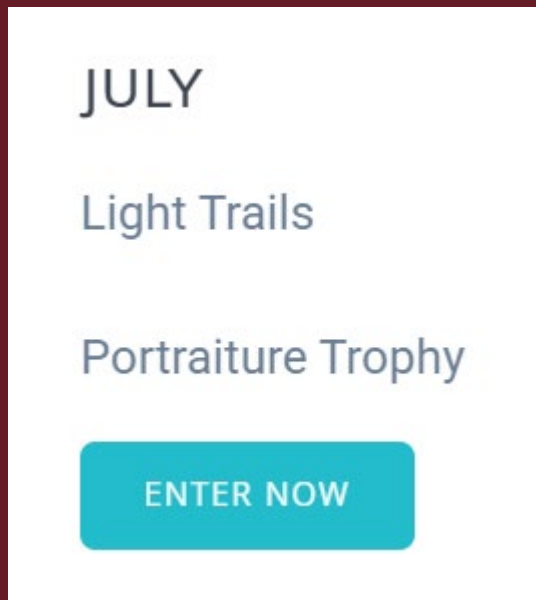
- **Play with light....**
- **Try side light (butterfly, top or bottom).**
- **High key, high iso, slow shutter and or small aperture.**
- **Low key, dark and gloomy.**
- **Back light.**



Thanks,

By Coen Cramer

- <https://whgcameraclub.org.nz/#>



- **72 DPI (only print can be 300DPI)**
- **2048 pixels**
- **Name your files;**
 - **No spaces**
 - **Open (o) Subject (s) or trophy (t)**
 - **Your membership number**
 - **Your category, (n) Novice, (i) Intermediate (s) Salon**
 - **_ (a low dash)**
 - **The title; TheFirstLetterOfEachWordIsACapital**
 - **o87s_ThisImageGetsHonors.jpg**