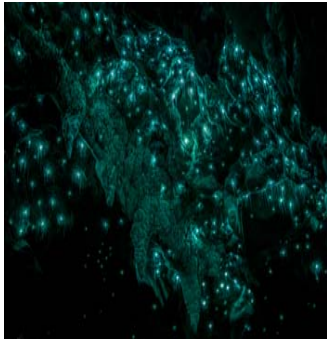


LONG EXPOSURE

| Member | Image Title | Grade | Comment | Mark |
|--------|----------------------|--------|---|----------|
| 1s | Trees At Night | Salon | I like what you're going for here and the overall scene is nice. For me the tree is too bright. I believe you light painted it? I think a dimmer light or shorter bursts of light may have produced a more pleasing lumination. Try painting the light from different angles also to cast shadows in different areas. | Accepted |
| 2s | Lights on the bridge | Salon | I like the flow of lights that pull your eye across the bridge and it engages me but I feel the foreground water is competing too much for my attention. The interest is really the bridge and the lights for me but as the water takes up a lot of the image it draws you away from it. A tighter crop maybe? | Accepted |
| 3s | Whirling | Salon | I really enjoy this image. The shutter speed, off level tilt and luminance captures the essence of being on the ride perfectly. The long exposure timing is just right I think. | Accepted |
| 4s | Kathak Footwork | Salon | This is an interesting shot. The zoomed in crop combined with the shutter speed works really well i think. The image allows me to visualise the scene beyond the image easily. It has sharp focus and good contrast which really allows the centerpiece of the picture to stand out. | Accepted |
| 5n | Tractor Blue | Novice | I'm not sure of your intention behind this shot. There is a lot of movement being captured and I think that is ok if it's abstract or ICM you're going for but im unsure if that was your intention? Maybe something solid in the frame could have added a needed focal point? | Accepted |
| 6s | Peace Full | Salon | The shutter speed you've used here has created a very nice feel to the water and youve found a nice scene to contrast it wwith. It's always tricky working in the bush as it's so busy and trying to find a clean composition can be difficult. Watch out for waterspots on your lens. Overall a very pleasant image. | Merit |



7s

Glow Worms

Salon

A great image. Really well composed and focused. Balanced exposure. Looks otherworldly. Original and really engages tme. Great work.

Highly
Commended



8s

Pohe Bridge Whangarei

Salon

Nice angle of the bridge and well exposed. There is a bit too much blank sky taking up real estate for my liking. The car lights are not quite drawing the attention that is probably intended. Maybe a higher angle could have drawn more attention to these?

Accepted



9n

Brighten my day

Novice

Appreciate what you're going for here. The use of a static object paired with movement could have worked well but the exposure was not quite long enough and the woman has ended up looking blurred instead. I think the balance and composition could have been better if the woman was captured in the far left quadrant with more movement. Great attempt!

Accepted



10i

Marokopa Falls

Intermediate

I like the tight crop and the cool colour shades. The use of high contrast makes it really engaging. A lovely soft exposure of the water has been gained from the shutter speed that you've chosen. Watch your highlights, the rocks in the middle are the focal point for me but I feel like I'm getting distracted by the vertical white highlights. Waterfall or a gathering of ghostly robed figures?!

Highly
Commended



11i

Tiritirimatangi Island

Intermediate

A classic long exposure landscape photo. The image has very nice smoothed out the water that contrasts well with the islands. I enjoy the soft focus on the foreground. Well composed. Nice use of colour and not too saturated. Well done.

Merit



12n

Decommission

Novice

I like that the bridge is used as a leading line to point to the interest in the background. your choice of exposure has smoothed out the water nicely. For me there is a little too much sky and contrast in the sky and I feel it pulls the eye away from the main interest in the picture. Maybe more foreground or a tighter crop next time? Keep up the good work.

Merit



13n

Moror Dream

Novice

Great composition. It really makes you feel like you are there peering through the fence. The exposure has captured the flow of traffic well and really leads the eye through the image. Very nice image.

Merit



14i

Light Painted Person

Intermediate

Great effort in creating an eye catching effect with your use of light painting. However the light fall off into the garden causes a distraction for me. I think a better choice of location could have really given better overall impact and created a really great image.

Accepted



15s

Steel wool spinning

Salon

10 out of 10 for effort and a fun effect. Well exposed. It would have been great to really focus on getting the whole effect of the spin in the frame and lose some of the foreground which doesn't add much to the image in my opinion. Hope no one got burnt in creating this shot!

Accepted



16s

The Cupola Has Arrived

Salon

This is a good documentary photo of a significant event. However, I think the shutter speed choice has only really added a small blur to certain objects in the image which I feel doesn't add anything to the scene. A long exposure isn't always beneficial to some images and I think this is the case here unfortunately.

Non-accepted



17i

Busy Intersection

Intermediate

I like the use of an s curve. An S curve is a powerful compositional tool. My question is... where is the s curve leading your eye to? The bright light at the top of the frame is a bit of a distraction that could have maybe been cropped out? Nice attempt.

Accepted



18i

Water Nymphs

Intermediate

This is a good attempt at capturing the movement of the fountain and people with your exposure choice. The image is cropped well to engage the viewer as much as possible on the focal points. I like the soft feel to the water fountains but feel more separation between the two girls in the right side of the frame may have enhanced the image.

Accepted



19i

Under the stars

Intermediate

I like the intention behind this shot. It's well composed, exposed well and it has a nice feel that makes me want to camp under the stars. The light cast on the back of the car takes away from the overall feel of the image for me and I think it could have been a great image if this was darker or composed with more space maybe?

Accepted



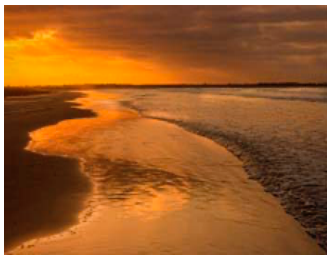
20i

Kariotahi Sunset

Intermediate

Are you going for ICM in this image? If so, for me it's either out of focus or panned too fast causing too much blur. I want something to grab onto a bit more, but otherwise I like what you're trying to do. Maybe a shorter exposure or slower panning?

Accepted



21i

Time and Tide

Intermediate

A nicely composed image, with nice colours, exposure choice and timing but unfortunately it lacks probably the most important thing and that is being in focus! Did your tripod sink into the sand maybe as the shot was being taken?

Accepted